

Abide With Me

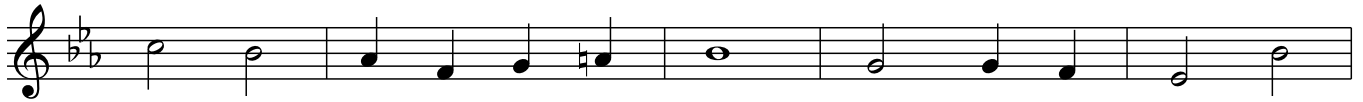
Henry F. Lyte, 1847

Ionian Mode (1-5-5)



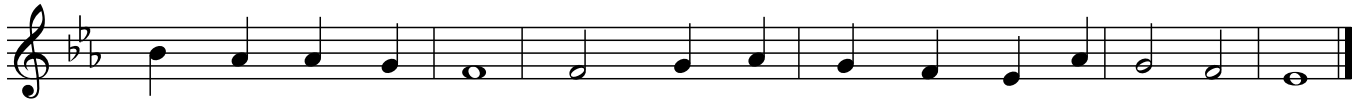
4 4 3 2 7 7 6+ 7 4 4 4 5 7
 3 2 2 1 5 6 5 0 4 3 3 3 5
 5 5 4 3 7 8 7 7 6 5 5 6 7

1. A - bide with me; fast falls the e - van - tide; The dark - ness
 2. Swift to its close ebbs out life's lit - tle day; Earth's joys grow
 3. I need Thy pres - ence ev - ery pass - ing hour. What but Thy
 4. Hold Thou Thy cross be - fore my clos - ing eyes; Shine through the



7 7 5 4 4 5 6+ 0 5 3 2 7
 6 5 3 2 3 3 4 3 2 2 1 5
 8 7 6 4 5 6+ 7 5 6 4 3 7

deep - ens; Lord with me a - bide. When oth - er help - ers
 dim; its glo - ries pass a - way; Change and de - cay in
 grace can foil the temp - ter's power? Who, like Thy - self, my
 gloom and point me to the skies. Heaven's morn - ing breaks, and



7 5 5 4 3 4 4 4 4 3 2 5 4 3 2
 6 3 2 3 4 2 3 2 3 2 1 4 3 2 0
 7 6 6 5 4 4 5 6 5 4 3 6 5 4 3

fail and com - forts flee, Help of the help - less, O a - bide with me.
 all a - round I see; O Thou who chang - est not, a - bide with me.
 guide and stay can be? Through cloud and sun - shine, Lord, a - bide with me.
 earth's vain shad - ows flee; In life, in death, O Lord, a - bide with me.

Music: William Henry Monk, 1861 (Eventide, 10.10.10.10)